

Tree Work Schedule

No.	Species	Works	Category
G01	Various	Fell trees to ground level, remove stumps.	C12
T02	Pittosporum	Fell tree to ground level, remove stump.	C1
T03	Irish yew	Fell tree to ground level, remove stump.	C1
T04	Common holly	Fell tree to ground level, remove stump.	C1
T05	Common lilac	Fell tree to ground level, remove stump.	C1
T07	Bay	Fell tree to ground level, remove stump.	C1
T08	Common ash	Fell tree to ground level, remove stump.	C1
T09	Common ash	Fell tree to ground level, remove stump.	C1
T10	Cherry	Fell tree to ground level, remove stump.	C1
T11	Apple	Fell tree to ground level, remove stump.	C1
T13	Apple	Fell tree to ground level, remove stump.	C1
T14	Bay	Fell tree to ground level, remove stump.	C1
T15	Sycamore	Fell tree to ground level, remove stump.	C1
T16	Butterfly bush	Fell tree to ground level, remove stump.	C1
T17	Sycamore	Fell tree to ground level, remove stump.	C1
T18	Common ash	Fell tree to ground level, remove stump.	U
T19	Common holly	Fell tree to ground level, remove stump.	C12
T20	Common ash	Fell tree to ground level, remove stump.	C1
T21	Highclear holly	Fell tree to ground level, remove stump.	C1

All tree work is to be undertaken in accordance with British Standard BS 3998:2010 Tree work - Recommendations.
 All arisings are to be removed and the site is to be left as found.
 Care is to be taken of the ground around retained trees to make sure that it does not become compacted as a result of tree surgery operations. No equipment or vehicles such as timber lorries, tractors, excavators or cranes shall be parked or driven beneath the crowns of any retained trees, to prevent subsequent compaction and root death.

Protective Fencing

To be erected prior to the commencement of all works on site, and retained in place throughout construction.
 Default specification: To comprise either 2.4m wooden site hoarding, or a 2.3m high scaffolding framework comprising of vertical and horizontal framework, well braced to resist impacts, with uprights to be spaced at a maximum of 3.0m intervals and driven into the ground by a minimum of 600mm. On to this, standard anti-climb welded mesh panels are to be securely fixed to each other with at least two scaffold clamps and to the scaffold framework with wire.
 Secondary Specification: To comprise of 2m tall welded mesh panels on rubber or concrete feet. Panels are to be joined together using a minimum of two anti-tamper couplers, installed so that they can only be removed from inside the fence. The panels should be supported on the inner side by stabilizer struts, which should be attached to a base plate and secured with ground pins.
 All weather notices should be erected at regular intervals on the weld mesh panels with words such as "Construction exclusion zone - Keep out".

Construction Exclusion Zone
KEEP OUT
 Do not move this fence

(TOWN & COUNTRY PLANNING ACT 1990)
 TREES ENCLOSED BY THIS FENCE ARE PROTECTED BY PLANNING CONDITIONS AND/OR ARE THE SUBJECT OF A TREE PRESERVATION ORDER.
 CONTRAVENTION OF A TREE PRESERVATION ORDER MAY LEAD TO CRIMINAL PROSECUTION.
 ANY INCURSION INTO THE PROTECTED AREA MUST BE WITH THE WRITTEN PERMISSION OF THE LOCAL PLANNING AUTHORITY



Temporary Retaining System

Before the excavations for the basement, a TRS (sheet piling; contiguous piling or similar) is to be installed along the blue hatched line (see drawing No. Arbtch TPP 01) to retain the surrounding rooting environment and remove the need for any over dig.

The type of TRS and its nature of being temporary or permanent are to be confirmed by the project engineer but the TRS is to be capable of retaining the retained rooting environment during the excavation and construction phases.

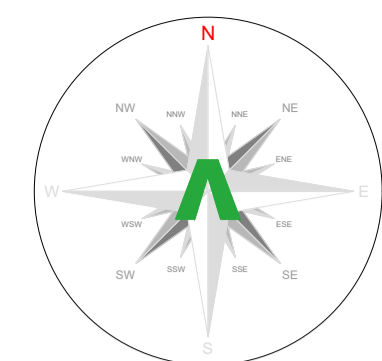
The installation of the TRS is to be undertaken before the ground works commence. The footprint of the TRS will be excavated manually under direct arboricultural supervision

Arboricultural Supervision

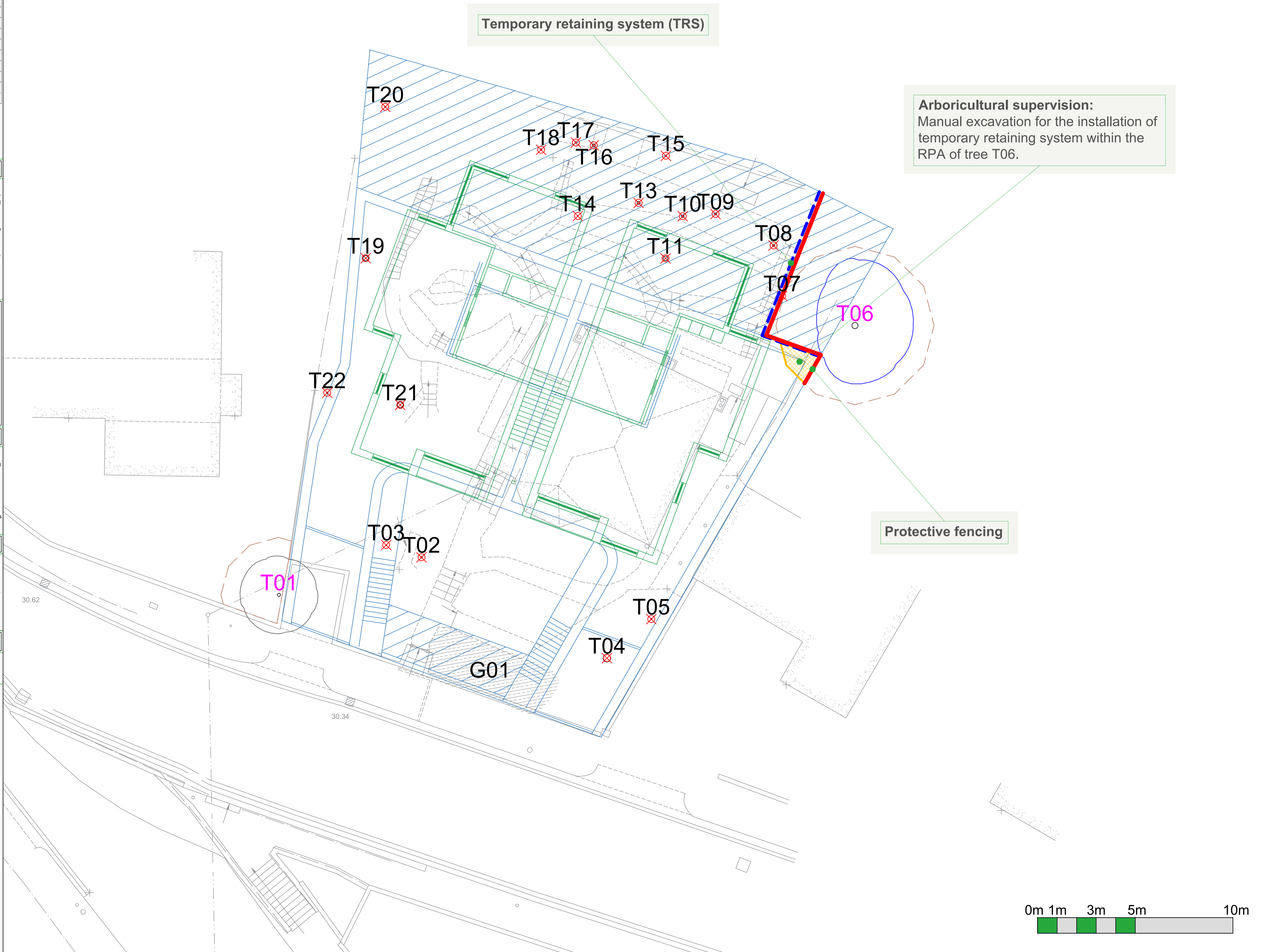
- The arboricultural consultant will be required to attend site to directly supervise all demolition and construction works that have to be undertaken within the root protection areas. This will include:
1. Pre-commencement site meeting;
 2. Location of protective measures;
 3. Supervised manual excavation for installation of TRS within the RPA of tree T06;
 4. Any demolition and/or excavations within or adjacent to RPAs, including foundations, hard surfacing or underground services (a non-exhaustive list);
 5. Arboricultural sign off and removal of protective measures.

Arboricultural Method Statement

Please refer to Arbtch Consulting Ltd. Tree Schedule and Arboricultural Method Statement, for full details on all surveyed trees and how all aspects of the development may be implemented without detriment to retained trees.



Indicative only



Arboricultural supervision:
 Manual excavation for the installation of temporary retaining system within the RPA of tree T06.

Protective fencing

Rev: Date: Notes:

ARBTECH
 Unit 3, Well House Barns, Chester, CH4 0DH
 https://arbtch.co.uk, 01244 661170

Project:
 27 Leigh Park Road,
 Leigh-on-Sea,
 Essex
 SS9 2DU



Drawing:
 Tree Protection Plan

Based on:
 582P03; 582P04

Drawing No:
 Arbtch TPP 01

Date:
 May 2020

Scale:
 1:100 @ A1

Drawn:
 JCH

Key:

Tree Nos.:	T01	Trunks:	○	RPAs:	○
Crown spread Cat. 'U' trees:	○	Crown spread Cat. 'B' trees:	○	Crown spread Cat. 'C' trees:	○
Canopy spread Cat. 'C' groups:	○	Topo. survey:	○	Proposed Basement:	○
Proposed 1st floor:	○	Trees to be removed:	T02	Protective fencing:	○
TRS:	○				

All dimensions should be checked on site. No dimensions are to be scaled from this drawing.
 Please notify us of any discrepancies found. Arbtch Consulting Ltd. cannot be held responsible for inaccuracies in the base drawing on which this plan is based.
 This drawing is designed to reflect the principles of the layout or design only, and relates only to the protection of retained trees.
 This drawing is not to be read as a definitive part of the engineering or construction design or method statement, and a structural engineer should be consulted over any matters of construction, loading or specification, and for any standards or regulatory requirements relating to proposed structures, hard surfacing or underground services.
 This drawing was produced in colour - a monochrome copy should not be relied upon.
 © Arbtch Consulting Ltd. 2018